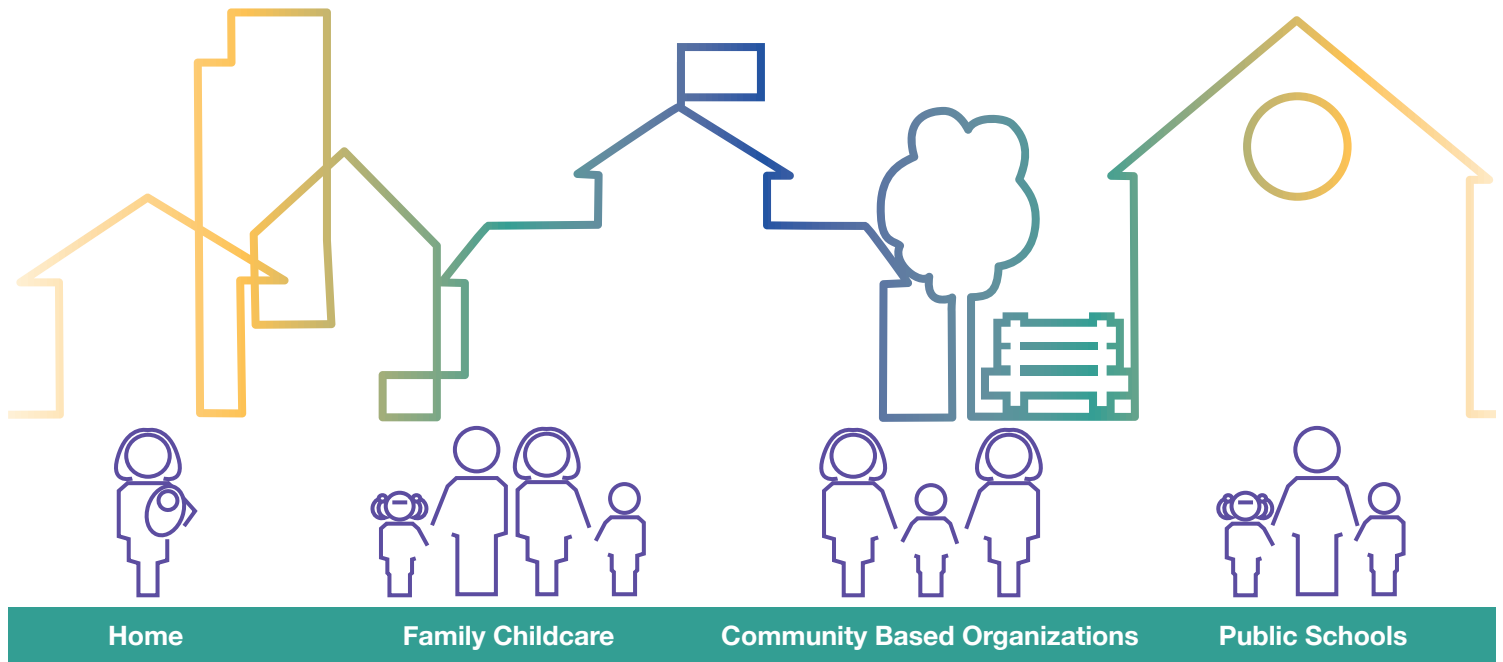


# INCLUSION IN ILLINOIS Birth to 5 Across Systems

Built on [Illinois Early Childhood Inclusion Vision Statement](#)

Supported by [The U.S. Department of Education and the U.S. Department of Health and Human Services Joint Policy Statement on Inclusion](#), the [NAEYC and DEC Joint Inclusion Statement](#) and the [National Early Childhood Inclusion Indicators Initiative](#).



Early Intervention (EI) Services and Early Childhood Special Education Services through the Local Education Agencies (LEAs) follow the child and family in their community: provided in homes, public schools, community-based organizations (CBOs) and family childcare.

## Public Outreach

- Effort to support families and providers at the very first opportunity to understand inclusion
- Must reach all sectors and be in small accessible learning objects
- Use of social media and other strategies to reach across the state

## Supports to CBO's to increase access

- Expand access to enhanced public funding to more programs
- Increase child care capacity to provide high-quality inclusive childcare through TA & PD
- Revise quality standards related to inclusion within ExceleRate
- Increase funding to ensure high quality structures are in place

## Guidance, incentives and accountability to support LEAs

- Create and implement guidance and models for LEAs to provide specialized services in the LRE which includes child care, Head Start or private preschool
- Assure state rules and regulations are in place to allow LEAs flexibility to provide services and supports

## Guidance, incentives and accountability to support EI

- Build infrastructure to support providers to provide services in CBO's with the intent of maximizing inclusive opportunities
- Continue to expand Natural Partners work to build communication and model across EI and CBOs

**ExceleRate Illinois Quality Framework with indicators of high-quality inclusion built in throughout each circle of quality.**